

Tommee Tippee®

BORN 1965

PerfectPrep® Pro

Bottle Feed Maker
now with Formula Dispenser

First-time setup is required, it'll take approximately 16 minutes.

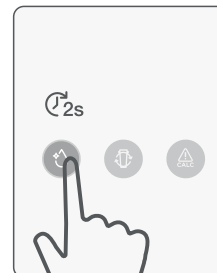


To get started with your Perfect Prep® Pro, follow these quick steps before first use.

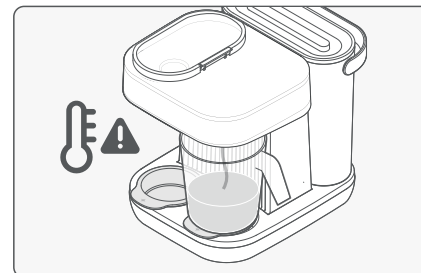
Quick set up guide



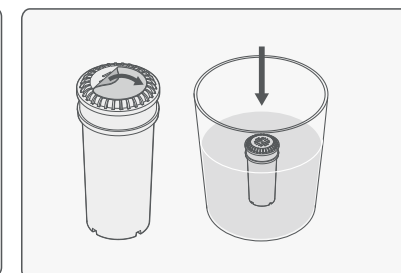
1. Place a 1 litre container under the water outlet. Fill the water tank with freshly boiled water from the kettle. **Please leave the filter out at this stage.**



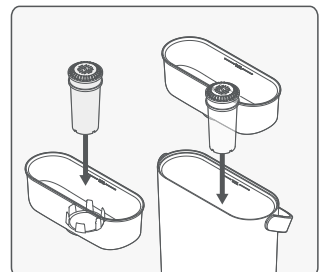
2. Press and hold the cleaning button for 2 seconds to start.



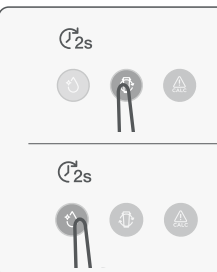
3. Wait for the cleaning cycle to complete. It'll take approximately 10 minutes. Then discard the water. **The first cleaning cycle must run through to the end and it will use all of the water to complete the cycle.**



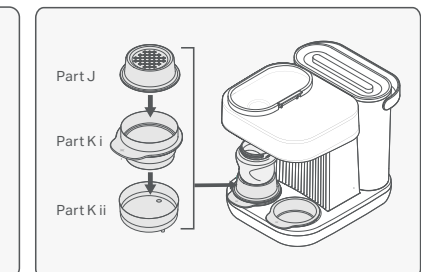
4. While the cleaning cycle is running, remove the sticker from the top of the filter and fully submerge the filter in cold tap water for 5 minutes. Tap the base of the filter to remove air bubbles.



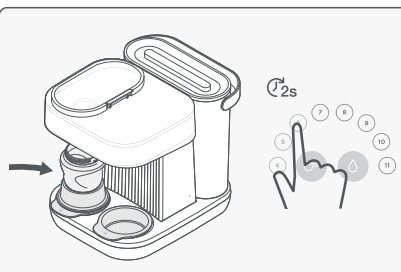
5. Insert the filter into the hopper, and insert the hopper into the water tank, fill with cold water, and place the water tank into the unit.



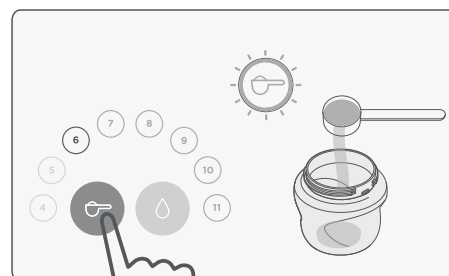
6. Hold the filter replacement button for 2 seconds, then press and hold the cleaning button for 2 seconds to dispense cold water. Discard the dispensed water.



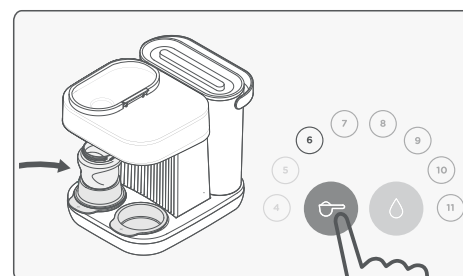
7. Fit the lower drip tray (part K ii) into the recess shown. Make sure the pins slot securely into the holes on the base of unit. Then add the upper drip tray (part K i) and finally the bottle stand (part J).



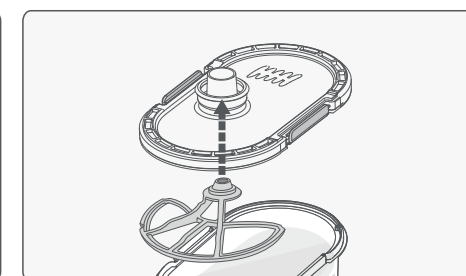
8. Place an empty bottle under the powder outlet. Select and hold your desired feed size button for 2 seconds.



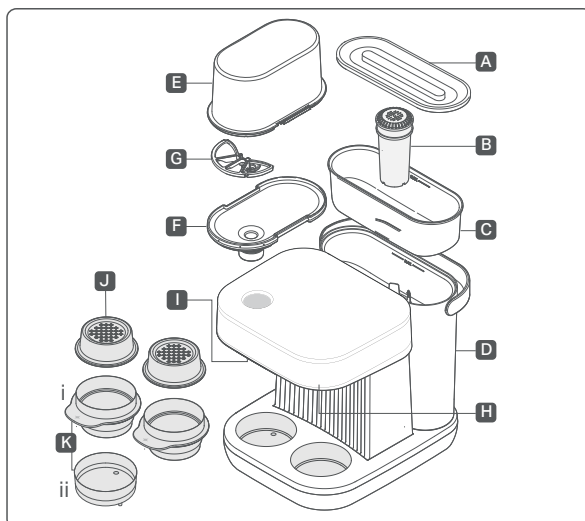
9. Tap the dispense powder button – the machine will zero the scale. Wait until the light changes to pulsing orange before you remove the bottle and add the exact amount of formula needed. Follow the instructions from your preferred milk powder brand.



10. Return the bottle and tap the dispense powder button again to store the setting. The dispense powder button will illuminate green.



11. Wash and dry all parts of the powder tank. Fill it with milk powder, insert the powder flow controller aligning the notches, position the nozzle through the lid opening and secure the lid. Place the assembled tank into the PerfectPrep®Pro ensuring the nozzle aligns with the hole inside the unit.



- A Water Tank Lid
- B Tommee Tippee® Anti-bacterial Water Filter
- C Filter Hopper
- D Water Tank
- E Powder Tank
- F Powder Tank Lid
- G Powder Flow Controller
- H Water Outlet
- I Powder Outlet
- J Bottle Stand x2
- K i. Upper Drip Tray x 2
- ii. Lower Drip Tray x 1