

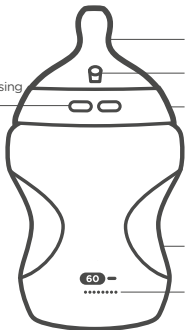
tommee
tippee

natural start™

A Hood



B Self sterilising
vents



C Silicone teat

D Anti colic valve

E Screw ring

F Bottle base

G 50ml measure

Mayborn (UK) Limited. Balliol Business Park,
Newcastle Upon Tyne, NE12 8EW, UK.

EU Representative

Mayborn France Sarl. 56 Rue de Paris,
Boulogne Billancourt, 92100, France.

Mayborn ANZ Pty. Ltd.

(ABN 66 154 703 134), PO Box 475
Mt Waverley VIC 3149, Australia.

All IP rights held by Mayborn (UK) Limited.
TOMMEE TIPPEE®, NATURAL START™. Copyright © 2024.

Patented and additional patents pending:
<https://www.tommeetippee.com/en-us/legals/patent>

042271901 P3



Any questions? Visit our website:

[tommeetippee.com](https://www.tommeetippee.com)

When self-sterilising, loosely place the assembled hood on the bottle before microwaving. Do not tighten to allow pressure release.

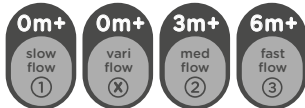
To prevent the teat from collapsing during feeding, pinch the valve gently between your fingers to ensure it's open.



We offer different flow rates

to keep up with your growing baby.

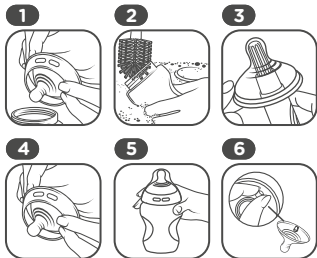
Every baby is unique so this is just a guide.



CLEANING, STERILISING AND ASSEMBLY

Our breast-like bottle is designed to support a smooth transition from breastfeeding to bottle feeding, but the truth is, a new bottle can sometimes take a little getting used to! It can take a few tries before a baby accepts a new bottle, if you need any support, don't hesitate to get in touch with us.

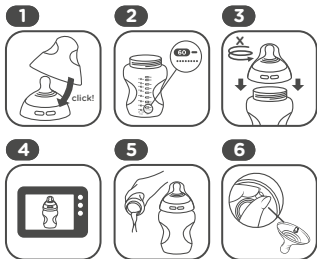
Before first use disassemble and place all components in boiling water for 5 minutes. This is to ensure hygiene.



1. Disassemble your bottle.
2. Wash **all** parts in warm soapy water and rinse or use a dishwasher (top shelf only).
3. Use a teat brush to gently clean the teat **C**, do not turn inside out as you may damage it. Do not clean feeding hole or anti colic valve **D** with the brush, damage may occur.
4. Reassemble your teat **C** and screw ring **E** and then place all parts in boiling water for 5 minutes or use another method of sterilisation such as microwave (see below), UV or steam steriliser or cold water tablet/liquid solution (**ensure you follow the manufacturers instructions**).
5. After sterilising reassemble your bottle ready for use.
6. To prevent the teat **C** from collapsing during feeding, pinch the valve **D** gently between your fingers to ensure it's open.

SELF-STERILISING IN A MICROWAVE

This method allows you to easily sterilise bottles using a microwave. Before self-sterilising, always wash **all** components thoroughly and rinse in clear water or use dishwasher (top shelf only).



1. Assemble the teat **C** in the screw ring **E** and click the bottle hood **A** in place.
2. Pour exactly 50ml of water into the bottle base **F**. The bottles have a 50ml measure **G**.

3. Rest the assembled hood **A**, teat **C** and screw ring **E** on top of the bottle base **F**. **Loosely place the assembled hood on the bottle before microwaving. Do not tighten to allow pressure release.**

4. Place in the microwave for 3 minutes.

To sterilise multiple bottles see table below.

Allow the bottles to cool down for at least 5 minutes before removing from microwave. **For glass bottles allow 30 minutes to cool down with the microwave door open.**

5. Pour out residual water and screw the assembled hood **A**, teat **C**, and screw ring **E** on to the bottle base **F** ready for use.
After self-sterilisation the bottle and teat will remain sterile for 24 hours if the bottle is unopened and fully assembled. Always store the bottles fully assembled.
6. To prevent the teat **C** from collapsing during feeding, pinch the valve **D** gently between your fingers to ensure it's open.

Microwave recommended times for all bottle sizes.

Based on microwaves from 700 to 1000 Watts.

Number of bottles	1	2	3	4	5
Sterilising time (min)	3	4	5	6	7.5

STORAGE AND USE

- Inspect before each use and pull the feeding teat in all directions.
- Always clean and sterilise before each use.
- Keep away from solvents or harsh chemicals.
- Do not allow the product to come into contact with oil based foods.
- Not suitable for use in a conventional oven or a combination microwave oven with the grill feature switched on.
- Do not leave a feeding teat in direct sunlight or heat, or leave in disinfectant ("sterilising solution") for longer than recommended, as this may weaken the teat.
- Teats are recommended to be replaced at least every 2 months for safety and hygiene reasons.
- Please dispose of this product and packaging responsibly.

FOR YOUR CHILD'S SAFETY AND HEALTH**WARNING!**

- Always use this product with adult supervision. Accidents have occurred when babies have been left alone with drinking equipment due to the baby falling or if the product has disassembled.
- Never use feeding teats as a soother.
- Continuous and prolonged sucking of fluids will cause tooth decay. Tooth decay in young children can occur even when non-sweetened fluids are used. This can occur if the baby is allowed to use the bottle for long periods through the day and particularly through the night, when saliva flow is reduced or if it is used as a soother.
- Always check food temperature before feeding. Heating in microwave oven may produce localised high temperatures. Take extra care when microwave heating. Always stir heated food to ensure even heat distribution and test the temperature before serving.
- Throw away at the first signs of damage or weakness.
- Keep components not in use out of the reach of children.
- Never attach to cords, ribbons, laces or loose parts of clothing. The child can be strangled.
- Glass bottle may break.
- **Caution: Loosely place the assembled hood on the bottle before microwaving. Do not tighten to allow pressure release. Do not heat in a microwave with the bottle sealed.**
- When making up feed, follow the formula milk manufacturer's instructions.
- The bottle hood can pose a suffocation hazard - keep out of reach of children.