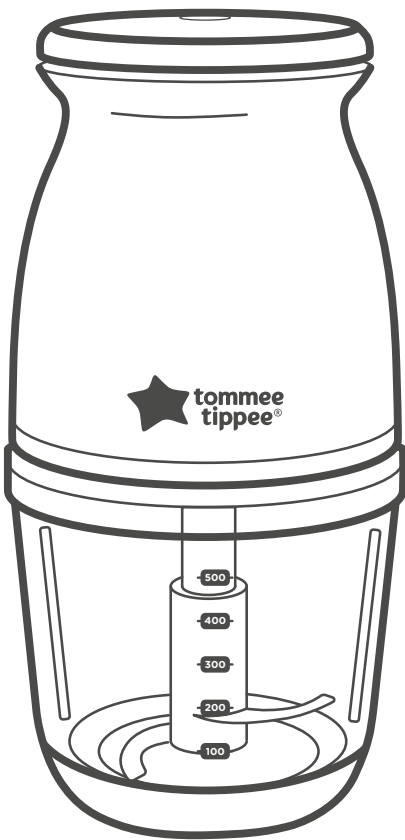


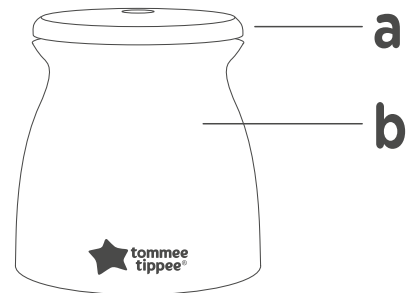


# quickchop™

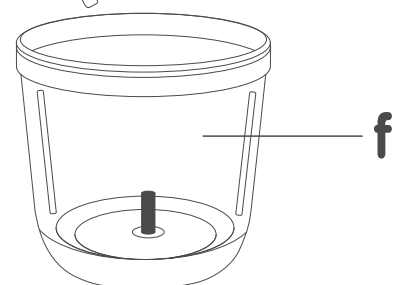
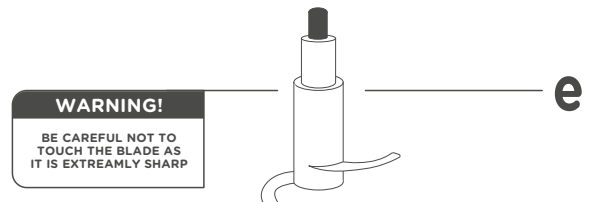
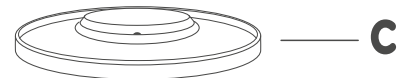
baby food blender



Scan for product support



Assemble all parts as shown below before attaching the motor



## BABY FOOD BLENDER

- a. Top Push Button
- b. Motor unit
- c. Bowl lid
- d. Silicone sealing ring
- e. Blender blade
- f. Glass Bowl
- g. Non-slip silicone base

## EN | IMPORTANT WARNINGS!

These instructions can also be found at [www.tommeetippee.com](http://www.tommeetippee.com)

Keep this instruction sheet for future reference as it includes important information. This appliance is intended for household use only. Do not use outdoors. Before plugging in the blender for the first time ensure that the voltage is compatible with your electricity supply by checking the label on the base of the unit. Do not immerse in water. To protect against fire, electric shock and injury to persons do not immerse cord, plugs or other parts of the unit in water or other liquid. Misuse of the product may result in the risk of fire, electric shock, and/or personal injury. Cleaning and user maintenance shall not be made by children. Keep the appliance and its cord out of reach of children. Do not let the cord hang over edge of the kitchen work surface or touch hot surfaces. This appliance is not intended for use by persons (including children) with reduced physical, sensory or mental capabilities, or lack of experience and knowledge, unless they have been given supervision or instruction concerning the use of the appliance by a person responsible for their safety. Children do not understand the dangers associated with operating electrical appliances. Never allow children to use this appliance. User maintenance other than cleaning is not required for this product. Do not operate any appliance with a damaged cord or plug or after the appliance malfunctions or has been damaged in any manner. If the supply cord is damaged it must be changed by a qualified person in order to avoid hazard. If within a retail warranty period this product should be exchanged at place of purchase, the manufacturer will then be made aware. For questions or support visit our website [www.tommeetippee.com](http://www.tommeetippee.com). Always use on a flat heat resistant kitchen surface. Do not move appliance when in use. Do not use any accessories other than those supplied with this appliance. Always disconnect the appliance from the supply if it is left unattended and before assembling, disassembling or cleaning. Switch off the appliance and disconnect from supply before changing accessories or approaching parts that move in use. Allow to cool before putting on or taking off parts and use and after every use wash the bowl, silicone seal and bowl lid in warm soapy water or use a dishwasher (top shelf only) and dry thoroughly. Wash the knife blade in warm soapy water and dry thoroughly. **The knife blade is not dishwasher safe.** Handle the knife blade carefully as it is extremely sharp. Care shall be taken when handling the sharp knife blades, emptying the bowl and during cleaning. Never leave the appliance running whilst empty. Do not attempt to repair the appliance yourself. Do not put any utensils into the blender when the blender is turned on. Make sure that the blade has stopped turning completely before removing the bowl lid. Do not fill the unit past the MAX line. Do not put in the microwave. Do not sterilise. Be careful if hot liquid is poured into the blender as it can be ejected out of the appliance due to sudden steaming. Regularly check the cord and plug for signs of damage, if visible remove from use immediately.

Before first use and after every use, wash the bowl, lid and knife blade in warm soapy water and dry thoroughly.

### **WARNING! BE CAREFUL NOT TO TOUCH THE BLADE AS IT IS EXTREMELY SHARP.**

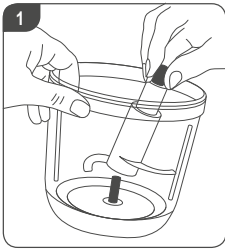
The bowl and lid are dishwasher safe (top shelf only). **The knife blade is not dishwasher safe.**

Wipe the motor unit with a damp cloth but **DO NOT IMMERSE IN WATER.** The department of health recommends that solid food should not be introduced before 6 months. Although you can start earlier (but not before 4 months) if advised by your health visitor or GP.

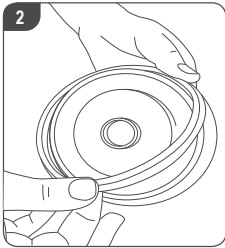
### **Information on the disposal for Waste Electrical & Electronic Equipment (WEEE)**

This symbol on the products and accompanying documents means that used electrical and electronic products should not be mixed with general household waste. For proper disposal for treatment, recovery and recycling, please take these products to designated collection points where they will be accepted on a free of charge basis. In some countries you may be able to return your products to your local retailer upon the purchase of a new product. Disposing of this product correctly will help you save valuable resources and prevent any possible effects on human health and the environment, which could otherwise arise from inappropriate waste handling. Please contact your local authority for further details of your nearest collection point for WEEE. Penalties may be applicable for the incorrect disposal of this product in accordance with national legislation. If the supply cord is damaged, it must be replaced by the manufacturer, its service agent or similarly qualified persons in order to avoid a hazard. The product is fitted with a BS 1363 mains plug containing a 3A fuse. If it ever becomes necessary to replace the fuse, only use fuses that are marked BS 1362, and rated at 3A. In the unlikely event that this plug is not suitable for the sockets in your home, it should be removed and a suitable plug fitted as follows: The wires of the mains lead are coloured in accordance with the following code: GREEN & YELLOW - EARTH, BLUE - NEUTRAL, BROWN - LIVE As these colours may not correspond with the coloured markings sometimes used to identify the terminals in the plug, connect as follows. The wire coloured GREEN AND YELLOW must be connected to the terminal marked E or by the earth symbol or coloured GREEN or GREEN AND YELLOW. The wire coloured BLUE must be connected to the terminal marked N or coloured BLACK. The wire coloured BROWN must be connected to the terminal marked L or coloured RED. If you are in any doubt about how to wire a plug or replace a fuse safely, consult a qualified electrician.

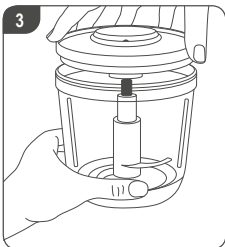
## HOW TO ASSEMBLE



1. Slide the knife blade down over the shaft. **WARNING!** Handle the knife blade carefully as it is extremely sharp.



2. Stretch and attach the silicone sealing ring around the outside of the bowl lid. Make sure the flat side sits against the lid.



3. Insert the lid **with the sealing ring** into the bowl. Make sure to press firmly to make sure the lid is sealed correctly.

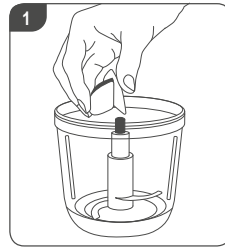


4. Lift the motor unit and place on top of the bowl with the lid. Turn until it drops into place.

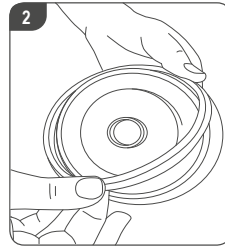


**WARNING!** The motor unit does not attach to the glass bowl, please ensure you hold and lift the blender with both hands when handling or moving the blender.

## HOW TO USE



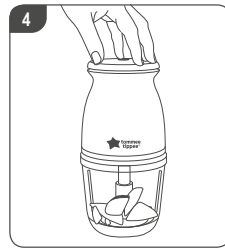
1. Remove the lid and place the food in the bowl. Do not fill the unit past the '200 ml'. To prevent the content overflowing, make sure to fill the bowl up to '200ml'. This appliance is intended for processing small quantities of food.



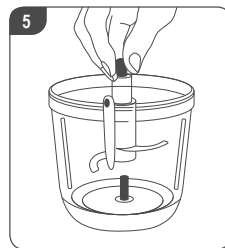
2. Insert the lid **with the sealing ring** into the bowl. Make sure to press firmly to make sure the lid is sealed correctly.



3. Lift the motor unit and place on top of the bowl with the lid. Turn until it drops into place.



4. Simply push the top button to activate the blades. Keep it pressed to blend the food. **Do not keep the top button pressed for more than 30 seconds. If it is operated for more than 30 seconds let the unit cool down for at least 2 minutes before operating it again.**



5. Make sure that the blade has stopped turning completely before removing the lid. Unplug the unit, remove the lid and remove the blender blade. Carefully pull the knife blade straight up. Empty the food from the bowl. Do not use the food blender bowl for storing food.

**WARNING!** After operating 4 cycles, let it cool down to room temperature before operating it again. Keep hands and utensils away from the cutting blade while chopping food.



Mayborn (UK) Limited Balliol Business Park, Newcastle upon Tyne, NE12 8EW, UK  
 EU Representative Mayborn France Sarl, 56 Rue de Paris, Boulogne Billancourt, 92100, France.  
 All IP rights held by Mayborn (UK) Limited and/or its affiliates.  
 TOMMEE TIPPEE®, QUICKCHOP™. Copyright© 2023. Made in China.

0447851 W4

Any questions?  
 Visit our website: [tommeetippee.com](http://tommeetippee.com)