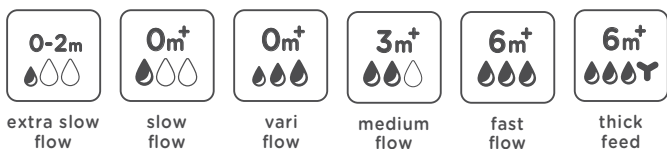
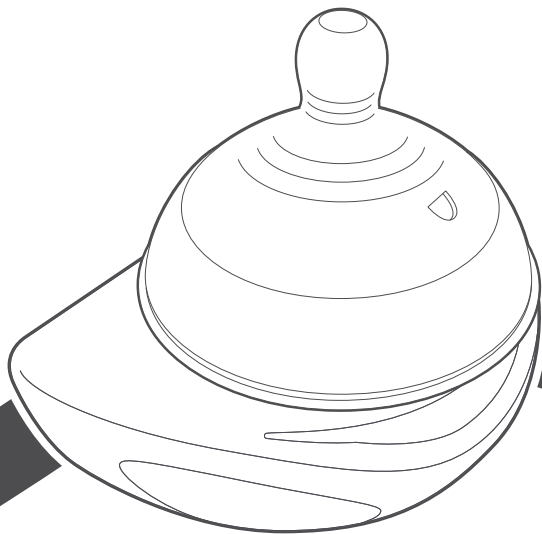
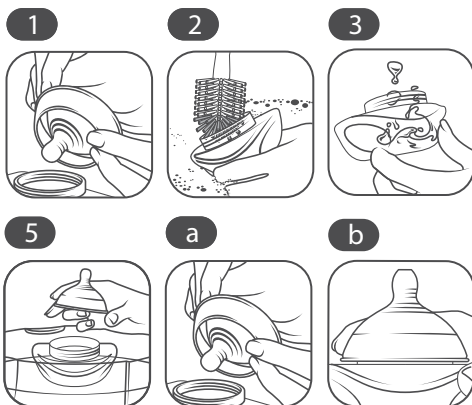


**tommee  
tippee**

*made for me*<sup>®</sup>



for best results  
make sure this  
valve can open



## EN | FOR YOUR CHILD'S SAFETY AND HEALTH

### WARNING!

- Always use this product with adult supervision. Accidents have occurred when babies have been left alone with drinking equipment due to the baby falling or if the product has disassembled.
- Never use feeding teats as a soother.
- Continuous and prolonged sucking of fluids will cause tooth decay. Tooth decay in young children can occur even when non-sweetened fluids are used. This can occur if the baby is allowed to use the bottle for long periods through the day and particularly through the night, when saliva flow is reduced or if it is used as a soother.
- Always check food temperature before feeding. Heating in a microwave oven may produce localised high temperatures. Take extra care when microwave heating. Always stir heated food to ensure even heat distribution and test the temperature before serving.
- Throw away at the first signs of damage or weakness.
- Keep components not in use out of the reach of children.
- Never attach to cords, ribbons, laces or loose parts of clothing. The child can be strangled.
- The bottle hood can pose a suffocation hazard - keep out of the reach of children.

### CLEANING

Before first use, clean the product. Clean before each use. Always wash the product immediately after use. Wash in warm soapy water and rinse in clean water or use a dishwasher (top shelf only). Do not clean with solvents or harsh chemicals. Do not allow product to come into contact with oil based foods (e.g. oil/tomato based sauces) as staining will occur. Do not turn the teat inside out for cleaning. Damage could result. Use a teat brush.



✓ **TAKE EXTRA CARE** when cleaning the sensitive anti-colic teat valve. In order to ensure optimum venting the teat valve is manufactured using a thinner silicone than the teat itself and therefore care needs to be taken during cleaning to ensure no damage is caused.



✗ **DO NOT USE A TEAT BRUSH** or any other implement to clean the anti-colic valve and/or the feeding hole as damage such as splits and tears may occur. However, performance of the teat may be affected if the anti-colic valve is not cleaned thoroughly after each use. Ensure valve is flushed with warm water during cleaning.

### STERILISING

Before first use place in boiling water for 5 minutes. This is to ensure hygiene. Suitable for all forms of sterilisation by steam (electric or microwave), boiling or cold water tablet/ liquid solution.

1. After each use disassemble all parts of the bottle.
2. Wash thoroughly with hot soapy water.
3. Rinse all components using fresh water.
4. After rinsing, re-assemble the teat and screw ring.
5. Place all components including the teat and screw ring assembly in the steriliser. After sterilisation the teat can then be picked up using the screw ring and used as normal.

### ASSEMBLY OF YOUR TEAT AND SCREW RING

- a. Due to the larger size of Tommee Tippee's new teat and screw ring, care needs to be taken during assembly to ensure that the teat is in the correct position shown (diagram a).
- b. The best method of assembly of the teat and screw ring is to carefully pull the teat through the ring in different directions to ensure the silicone lip fully 'clips' over the edge of the screw ring. The area where the teat and screw ring meet should be flush as shown (diagram b). Though you may find this tricky at first, you will quickly develop a technique and find it as easy as a conventional teat and screw ring.

### STORAGE AND USE

Inspect before each use and pull the feeding teat in all directions. Do not store or leave in direct sunlight or near a source of heat. Do not store with or allow to come into contact with solvents or harsh chemicals. Not suitable for use in a conventional oven or a combination microwave oven with the grill feature switched on. Do not leave a feeding teat in direct sunlight or heat, or leave in disinfectant ("sterilising solution") for longer than recommended, as this may weaken the teat. For safety and hygiene reasons it is recommended the a feeding teat is replaced at least every 2 months. Do not heat in a microwave with bottle sealed. Remove teat, locking ring and bottle hood.

**Mayborn (UK) Limited**  
Balliol Business Park, Newcastle upon Tyne, NE12 8EW, UK

#### EU Representative

Mayborn France Sarl, 56 Rue de Paris,  
Boulogne Billancourt, 92100, France

TOMMEE TIPPEE<sup>®</sup>, MADE FOR ME<sup>®</sup>. Copyright 2022.  
All IP rights held by Mayborn (UK) Limited and/or its affiliates.  
Patented; <https://www.tommeeippee.com/en-us/legals/patent>,  
EP1863427 AND EP1765257.

**Mayborn USA Inc.**  
11th Floor, 1010 Washington Boulevard, Stamford,  
Connecticut 06901.

423645

**tommeeippee.com**



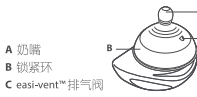
## 注意事项

- 请注意！
- ✓ 婴儿必须在成人看管下使用此产品。有些意外的发生，是由于婴儿在没有成人看管下独自饮用，而造成跌倒、误吞细小组件等情况。
  - ✓ 当使用微波炉加热时要格外小心，经常搅动食品确保受热均匀，喂奶前请检查食物温度。
  - ✓ 喂奶前要先摇匀已加热的饮品，使受热均匀，然后测试温度，以免过热烫伤宝宝。
  - ✓ 调配奶粉时，请依照奶粉制造商的说明指示。

为了您孩子的安全与健康  
警告！

应在成人监护下使用本产品；  
不应将奶嘴作为安抚奶嘴使用；  
长期吮吸将导致龋齿，即使使用不加糖的液体，幼儿也可能发生蛀牙。  
如果允许婴儿长时间使用奶瓶，尤其是在唾液流量减少的夜间或使用奶瓶作为安抚奶嘴时，就会发生这种情况；  
喂食前应检查食物的温度；  
如果产品为玻璃制品，请注意玻璃易碎；  
保持所有不使用的部件放在儿童触及范围之外，使儿童不能接触，以免被儿童入口误吞或发生其他危险的意外。不应将奶瓶及奶瓶任何部件作为玩具使用；  
切勿将其连接到绳索、丝带、花边或衣领的松散部分。  
这可能会对儿童产生窒息风险；  
如发现现有破损或缺陷，请立即舍弃。

### 产品组装



- A 奶嘴
- B 锁紧环
- C easi-vent™ 排气阀

### 快速使用

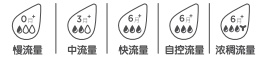
- 1 使用前，请用温水加清洁剂清洗所有组件，并用清水冲洗干净并消毒。
- 2 按上图指南，组装奶瓶。
- 3 组装奶瓶时，请检查easi-vent™ 排气阀(C)上的切口是否已打开。如切口没有打开，请用手指将排气阀轻轻几下，令切口打开。如排气阀切口没有打开，会影响奶瓶的排气。
- 4 准备饮品。
- 5 喂宝宝。
- 6 使用后，应立即用温水加清洁剂清洗所有组件，并用清水冲洗干净，准备再次消毒。

### 清洗及消毒

- ✓ 请在第一次使用前清洗本产品。
- ✓ 每次使用后，应立即清洗。
- ✓ 每次使用前进行清洗或消毒。
- ✓ 为保证卫生，首次使用前在沸水中消毒5分钟，煮沸消毒时水量应足够，避免产品因长时间接触到温度较高的锅底或锅沿而导致变形。
- ✓ 请用温水加清洁剂清洗产品，并用清水冲洗干净。或可使用洗碗机(仅限上层)。
- ✓ 可用Closest to Nature™ 奶瓶清洁剂清洗奶瓶的其他组件。
- ✓ 清洗完成后，可随即进行消毒。
- ✓ 所有奶瓶组件都应消毒。
- ✓ 所有奶瓶组件都适合蒸汽消毒(电子或微波炉)、煮沸消毒或冷水消毒(食品级消毒片/溶液)。
- ✗ 请勿用带刺激性的化学剂清洗此产品。
- ✗ 请不要让产品接触含油份的食物(如：油、蕃茄等)，因为产品可能会着色。
- ✗ 请勿将奶瓶翻转清洗，以免造成破损。
- ✗ 切勿使用奶瓶刷或其他用具清洗排气阀和奶嘴末端的小孔，以免造成破损。
- ✓ 当清洗奶嘴上 easi vent 排气阀时，请加倍小心，为确保奶嘴具有最佳的排气功能，排气阀采用了比奶嘴本身更薄的硅胶制成，清洗时请加倍小心，确保不会造成破损。
- ✗ 切勿使用奶瓶刷或其他用具清洗 easi-vent 排气阀及奶嘴末端的小孔，以免造成破损。但是若每次使用完后，easi-vent 排气阀没有被完全清洗干净，有可能会影响奶瓶的排气。故请牢记在清洗时，用温水冲洗排气阀。

### 存放及使用

- ✓ 在每次使用前，请检查产品，并向不同方向提拉扯一下奶嘴。如发现有破 或不良情况，请立即舍弃。
- ✓ 奶瓶及所有组件应放置在婴儿接触不到的地方。
- ✓ 出于安全和卫生因素考虑，我们建议您每两个月更换一次奶嘴。
- ✗ 不要将奶嘴置于阳光直射处、直接置于热源处或长期置于消毒剂中，这将导致奶嘴老化。
- ✗ 请不要让产品接触或带有刺激性的化学剂或化学用品一起存放。
- ✗ 不适用于烤箱、或当多功能微波炉烤箱的烘培功能运行时，此产品亦不适用。
- ✗ 使用微波炉加热时，不能密封住奶瓶，请将奶嘴、螺旋盖和奶瓶盖都移走。



慢流量 | 中流量 | 快流量 | 自控流量 | 浓稠流量

总经销 上海家化联合股份有限公司  
上海市保定路527号

全国热线 400 820 3988 (手机) 600 820 3808 (座机)

Mayborn (UK) Limited 地址: Balliol Business Park,  
Newcastle upon Tyne, NE12 8EW

版权所有 © 2022.

Mayborn (UK) Limited 和其附属公司持有所有知识产权。  
TOMMEE TIPPEE®. MADE FOR ME®.  
中国发明专利号 ZL20058002130.4 和 ZL200580049380.7.

Mayborn (UK) Limited, Balliol Business Park,  
Newcastle upon Tyne, NE12 8EW

All IP rights held by Mayborn (UK) Limited and/or its affiliates  
TOMMEE TIPPEE®. MADE FOR ME®.  
Patented; ZL200580049380.7 and ZL20058002130.4

资料编号(leaflet No.): 423645