

EN Before using your soother/pacifier and your StayPut Pocket™, please ensure that you read these instructions thoroughly. Please keep this instruction sheet for future reference as it includes important information.

For your child's safety WARNING!

Ensure you are using the correct soother/pacifier for the infant's age range. Inspect carefully before each use. Pull the soother/pacifier in all directions. Throw away at the first signs of damage or weakness. Only use dedicated soother holders tested to EN 12586. Never attach ribbons or cords to a soother/pacifier, your child may be strangled by them. Strangulation hazards include the cutting off of blood supply to fingers and limbs. Decorations should not be added to the soother/pacifier as they may detach and your child could choke on them. Do not leave soother/pacifier in direct sunlight or near a source of heat, or leave it in disinfectant for longer than recommended, this may weaken the teat/nipple. Prolonged soother/pacifier use after the age of 24 months may interfere with dental development. Tommee Tippee recommends stopping soother/pacifier use entirely when your child is older than 36 months. The StayPut Pocket™ is to be used by adults only. The StayPut Pocket™ is suitable for use with the Tommee Tippee Ultra-light StayPut 0-6 month soother/pacifier only.

CLEANING AND STERILIZATION

Before first use place the soother/pacifier and part B of the StayPut Pocket™ in boiling water for 5 min, allow to cool, squeeze out any trapped water from the soother/pacifier. This is to ensure hygiene. Clean before each use. Wash in warm soapy water and rinse in clean water or use a dishwasher (top shelf only). Remove any water that may have entered the teat/nipple by squeezing the teat/nipple. Do not clean with solvents or harsh chemicals. Suitable for sterilization by steam (electric and microwave), boiling or cold water tablet/liquid solution.

STORAGE AND USE

Do not store in direct sunlight or near a source of heat. Do not store with or allow to come into contact with solvents or harsh chemicals. Never dip the teat/nipple in sweet substances or medication, your child may get tooth decay. **Replace the soother/pacifier after one month, for safety and hygiene reasons.** In the event that the soother/pacifier becomes lodged in the mouth, DO NOT PANIC; it cannot be swallowed and it is designed to cope with such an event. Remove from the mouth with care, as gently as possible. When the soother/pacifier is not in use for instance after sterilization, keep dry in a covered container. Complies with EN1400. StayPut Pocket™ is not to be used with a silicone phone case.

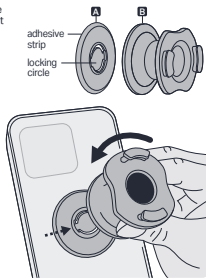
Sterilizer Case — Operation Guide

- 1 Add water to one half of the sterilizing case so that the water level sits between the two black lines, and place one or two soothers/pacifiers, or one soother/pacifier and one StayPut Pocket™ **part B** in it. There is no need to sterilize part A.
- 2 Close the sterilizer case securely, noting a locking click in each corner.
- 3 Ensure the microwave heat plate is clean. Microwave on high power (750-1000w) for 4 minutes.
- 4 After microwaving, allow to cool. **WARNING** Contents may still be hot.
- 5 Carefully remove the case, pour out any remaining water, and close it securely.
- 6 Check soother/pacifier and/or StayPut Pocket™ have cooled before use.



StayPut Pocket™ - Instructions for use

- 1 After cleaning and sterilizing the StayPut Pocket™, make sure it is dry, and ensure the back of your phone case is clean and dust free.
- 2 Remove the adhesive strip from the back of **part A** of the StayPut Pocket™.
- 3 Apply **part A** centrally to the phone case, **ensuring the central locking circle is positioned horizontally**, and press firmly for 5 – 10 seconds.
- 4 Align **part B** of the StayPut Pocket™ with **part A** and twist 90° in an **anti-clockwise direction** until secured.
- 5 Place your Ultra-light StayPut 0-6 month soother/pacifier in the StayPut Pocket™ and press on either side to secure.



WARNING

A TORN OR BROKEN SOOTHER
POSES A CHOKING HAZARD.
INSPECT CAREFULLY BEFORE
EACH USE. PULL THE TEAT IN
ALL DIRECTIONS. THROW
AWAY AT THE FIRST SIGN OF
DAMAGE OR WEAKNESS. A
CORD OR RIBBON ATTACHED
TO A SOOTHER POSES A

STRANGULATION HAZARD. DO
NOT ATTACH A SOOTHER TO
YOUR CHILD'S CLOTHING.

Mayborn USA Inc, 1010 Washington Boulevard,
9th Floor, Stamford, CT 06901

Mayborn (UK) Limited, Balliol Business Park,
Newcastle upon Tyne, NE12 8EW, UK.

EU Representative. Mayborn France Sarl,
56 Rue de Paris, Boulogne Billancourt, 92100, France.

Mayborn ANZ Pty Ltd. (ABN 66 154 703 134), Unit 21,
15 Ricketts Road, Mt Waverly, Victoria 3149, Australia.

—
All IP rights held by Mayborn (UK) Limited and/or its affiliates.
TOMMEE TIPPEE®, STAYPUT POCKET™. Copyright © 2025.
Made in China.

0433777 W1

tommeeippee.com

**Tommee
Tippee®**

BORN 1965