

This appliance is not intended for use by persons (including children) with reduced physical, sensory or mental capabilities, or lack of experience and knowledge, unless they have been given supervision or instruction concerning use of the appliance by a person responsible for their safety. Do not place on or near a hot gas or electric burner or in a heated oven. Unplug from outlet immediately when any appliance is used by or near children. Unplug from outlet when not in use and before cleaning the appliance. Do not operate any appliance with a damaged cord or plug or after the appliance malfunctions or has been damaged in any manner. Return appliance to the nearest authorized service facility for examination, repair or adjustment. The use of accessory attachment is not recommended by the appliance manufacturer as this may result in fire, electric shock or injury to persons. Do not use outdoors. Do not let cord hang

When using electrical appliances, basic safety precautions should always be followed including the following:
Do not touch hot surfaces, use handles and knobs. Always use on a flat heat resistant surface. To protect against fire, electric shock and injury to persons do not immerse cord, plugs or other parts of the unit in water or other liquid. When in use the Sterilizer and Dryer contains hot water and steam. Extreme caution must be used when moving an appliance containing hot oil or other hot liquids. Always keep the Sterilizer and Dryer and its plug out of reach of small children. Before plugging in the Sterilizer and Dryer for the first time ensure the voltage is compatible with your electricity supply by checking the label on the base of the unit. Ensure water has been added to the unit before switching the unit on. It is recommended that the cord be kept as short as possible. User maintenance other than cleaning or descaling is not required for this product. The heating element surface is subject to residual heat after use.

These instructions can also be found at www.tommeetippee.com
Keep this instruction leaflet for future reference as it includes important information.

IMPORTANT SAFEGUARDS READ ALL INSTRUCTIONS FOR HOUSEHOLD USE ONLY



steridryer 
electric steam sterilizer
and dryer

instructions for use



05228520

SAVE THESE INSTRUCTIONS

Used electrical and electronic products should not be mixed with general household waste. For proper disposal for treatment, recovery and recycling, please take these products to designated collection points. In some countries you may be able to return your products to your local retailer upon the purchase of a new product. Disposing of this product correctly will help you save valuable resources and prevent any possible effects on human health and the environment, which could otherwise arise from inappropriate waste handling. Please contact your local authority for details of your local collection point. This appliance has a polarized plug (one blade is wider than the other). To reduce the risk of electric shock, this plug is intended to fit into a polarized outlet in only one way. If the plug does not fit fully into the outlet, flip the plug. If it still does not fit, contact a qualified electrician. Do not attempt to modify the plug in any way.

over edge of table or counter or touch hot surfaces. Always attach the plug to the unit first, and then plug into the wall outlet. To disconnect turn any control "off" then remove the plug from the wall outlet. Do not use appliance for anything other than intended use. Do not open whilst in use as this product contains boiling water. Beware of escaping steam from the vent holes in the lid. Take care when lifting the sterilizer lid after use to avoid scalding. Do not move appliance when in use. Not for space heating purposes. A short power-supply cord is provided to reduce the risks resulting from becoming entangled in or tripping over a longer cord. Extension cords are available and may be used if care is exercised in their use. The marked electrical rating of the extension cord should be at least as great as the electrical rating of the appliance; If the appliance is of the grounded type, the extension cord should be a grounding-type 3-wire cord, and the longer cord should be arranged so that it will not drape over the countertop or tabletop where it can be tripped over, snagged, or pulled on unintentionally (especially by children). To ensure continued protection against risk of electric shock, connect to properly grounded outlets only. Children shall not play with this appliance. Keep all components out of reach of children.

Mayborn USA Inc,

1010 Washington Blvd, 11th Floor, Stamford, CT 06901

All IP rights held by Mayborn (UK) Limited and/or its affiliates.

TOMMEE TIPPEE®. Copyright © 2022.

Made in China.

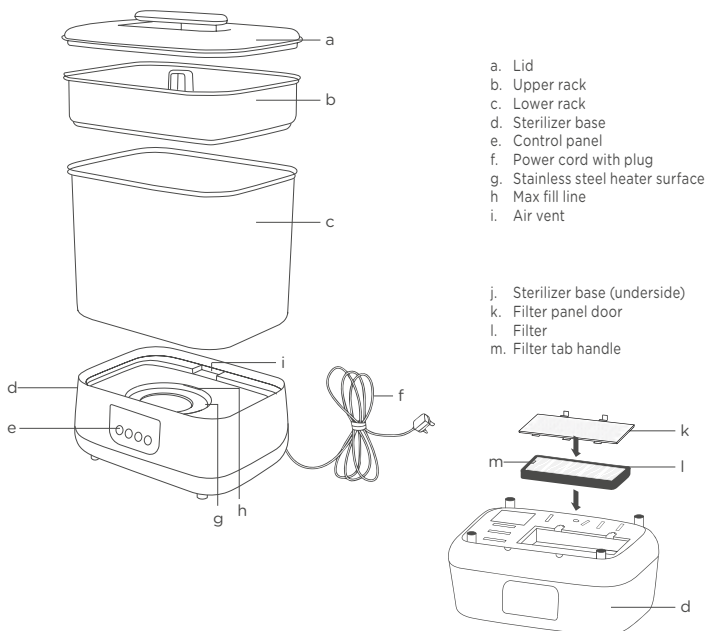
Model number: WX-965D.
Voltage: 120V~ 60Hz 600W

05228520 19121022_1

Any questions?
Visit our website:
tommeetippee.com



PARTS GUIDE

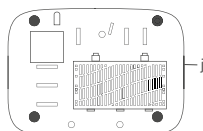


HOW TO REPLACE THE FILTER

It is recommended to change the filter every 6 months. The filter is found on the underside of the sterilizer base (j).

To change the filter:

1. Unclip the filter panel door (k) and remove old filter.
2. Place the filter (l) into the sterilizer base, making sure that the tab handle is still visible on top of the filter (m).
3. Place the filter panel door back onto the sterilizer base (j).



CONTROL PANEL



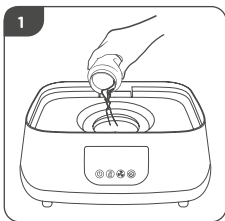
BEFORE FIRST USE

You must insert the filter provided into the underside of the sterilizer base before you start using the sterilizer and dryer.

USAGE

It is important that all bottles, nipples and accessories are empty and that they are clean and fully rinsed in fresh water before placing in the appliance for sterilization.

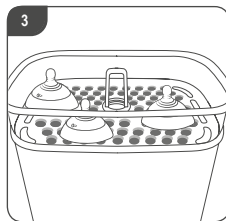
Use on level surface and be sure there is no debris under the unit and the rubber pads are touching the surface. This sterilizer is designed for use with Tommee Tippee bottles and feeding accessories (except bottle brush).



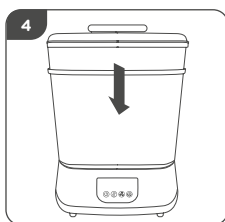
Remove the lid (a) and the racks (b), (c) from the sterilizer base (d). Pour 120ml of water onto the stainless steel heater surface (do not go over the max fill line (h)). If using dry only function you do not need to add any water.



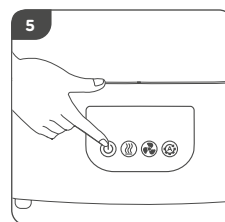
Insert lower rack (c), place clean bottles with their opening facing downward onto the lower posts. Place hoods onto the bottle bases.



Insert the upper rack (b) and place in the bottle accessories (eg. nipple and screw ring).



Place the lid (a) on top. Please ensure that the lid fits securely onto the upper rack without any gaps.



Plug the sterilizer into the power outlet. Press the on/off button. The sterilizer will emit a "beep" sound and the button will light up. Choose your desired function following the instructions on the next page.

CHOOSE YOUR FUNCTION

STERILIZE AND DRY

1. Press the automatic sterilize and dry button once. The appliance will beep once and the sterilization cycle will start. The sterilizing time is approximately 10 minutes.



2. When the sterilizing cycle is complete, the drying cycle will follow automatically. Drying cycle is complete, the appliance will beep 5 times and power off automatically. Please allow to cool for at least 5 minutes before opening the sterilizer.

STERILIZE ONLY

1. Press the sterilize button once. The appliance will beep once and the sterilization cycle will start. The sterilizing time is approximately 10 mins.



2. When sterilization cycle is complete, the appliance will beep 5 times and switch off automatically. Please allow to cool for at least 5 minutes before opening the sterilizer.

CAUTION!

If you need to drain water from the base, always pour sideways away from the air vent in the direction marked inside the base.

DRY ONLY

1. Press the dry button once. The appliance will beep once and the drying cycle will start.



2. The drying cycle is approximately 30 minutes.
3. When the drying cycle is completed, the appliance will beep 5 times and switch off automatically. Please allow to cool for at least 5 minutes before opening the sterilizer.

Please note: The sterilization and/or the drying cycle can be stopped any time by pressing the on/off button.

CLEANING

Unplug and allow to cool before cleaning. After each use pour away remaining water from the sterilizer base by tipping the sterilizer and dryer sideways over a sink, ensuring no water gets into the air vent (i), and wipe clean with a damp cloth only. The lid (a) and the two racks (b, c) can be cleaned in hot water. Do not clean with abrasive cleaners.

WARNING!

TO AVOID THE RISK OF ELECTRIC SHOCK, INJURY OR DAMAGE: ALWAYS UNPLUG YOUR PRODUCT BEFORE CLEANING. DO NOT IMMERSE THE BASE, THE POWER CORD OR THE PLUG IN WATER OR OTHER LIQUIDS. DO NOT CLEAN BASE UNDER WATER TAP.

DO NOT use metal objects or scourers to clean your Sterilizer and Dryer. DO NOT use bleach or sterilizing fluid to clean it. DO NOT use abrasive or anti-bacterial materials. DO NOT scrub the heat plate.

CAUTION! UNDER NO CIRCUMSTANCES USE ABRASIVE, CORROSIVE OR SCRATCHING CLEANING AGENTS, AS THESE COULD DAMAGE YOUR STERILIZER.

Please note: If there is insufficient water to complete the sterilization phase effectively, the appliance will "beep" 5 times and the function light will flash for 2 hours. Do not use the bottles or accessories. Repeat usage instructions to ensure effective sterilization. Drying time based on 260ml / 9oz bottles. If you are using larger bottles, then extra drying time may be required.

DE-SCALING

The guide below shows what the frequency of de-scaling should be.

Hard water: 14 days

Medium: 21 days

Soft: 28 days

You can find out your water quality from your water provider.

Unplug the unit and allow to cool before descaling. After each use pour away remaining water from the unit base by tipping the unit sideways over a sink and wipe with a damp cloth only. We recommend that you descale your appliance according to the guidelines above to ensure that it continues to work efficiently. Living in a hard water area can produce limescale quicker than other areas so descaling is required sooner. Use a descaler that is suitable for use with stainless steel and use as per the manufacturer's guidelines. Or you can use white vinegar or a descaling sachet to descale your unit. Please use as per manufacturer's guidelines. Where no method is stated, 1:4 descaler to water ratio can be applied.

TROUBLE SHOOTING

This information can also be found at tommeetippee.com

CONDITION	POSSIBLE CAUSE	REMEDY
Machine will not start	Appliance is unplugged	Make sure the plug is securely inserted into the power outlet and power is turned on
	Appliance is not turned on	Press on/ off button before choosing function
Scaling on the stainless steel heater surface	Limescale	Descale Unit
White marks on bottles	Limescale	Descale Unit